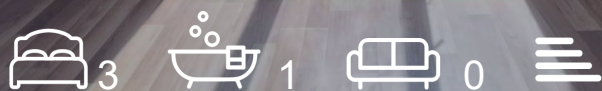
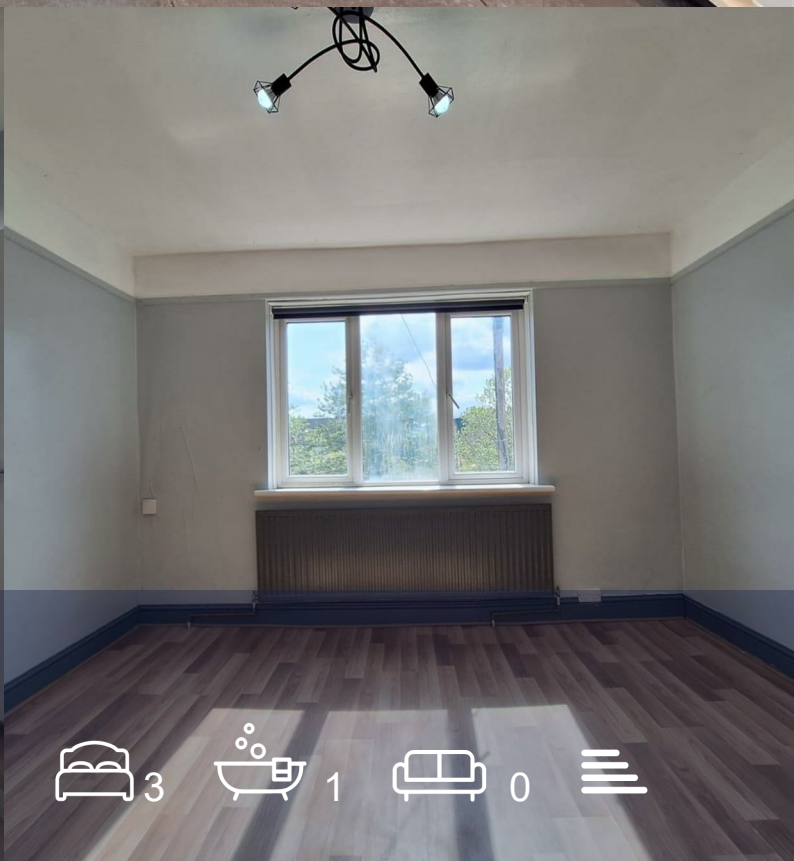




197b Seely Road

Tooting, London, SW17 9RA

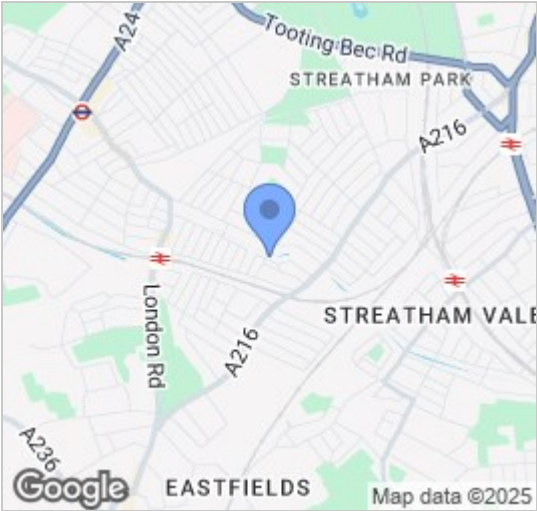
£2,345 Per month



Floor Plan



Area Map



Energy Efficiency Graph



Viewing

Please contact our Sunshine Estates Office on 020 8066 5055 if you wish to arrange a viewing appointment for this property or require further information.



Sunshine Estates presents this lovely 3-bedroom flat, centrally located in Streatham Vale. The property consists of 3 airy bedrooms, 1 bathroom and large kitchen.

- In the area:
- Excellent transport links to central London, with three railway stations providing convenient commutes.
 - A range of amenities, including numerous food and clothing shops conveniently located near residential zones.
 - Close proximity to green spaces, including Tooting Bec Common and Streatham Common.
 - The area is known for its friendly community and welcoming atmosphere.
 - Streets lined with a mix of architectural styles, including Victorian, Edwardian, and Arts and Crafts properties.

Don't miss out on this charming home! Contact us today to arrange a viewing.



These particulars, whilst believed to be accurate are set out as a general outline only for guidance and do not constitute any part of an offer or contract. Intending purchasers should not rely on them as statements of representation of fact, but must satisfy themselves by inspection or otherwise as to their accuracy. No person in this firms employment has the authority to make or give any representation or warranty in respect of the property.